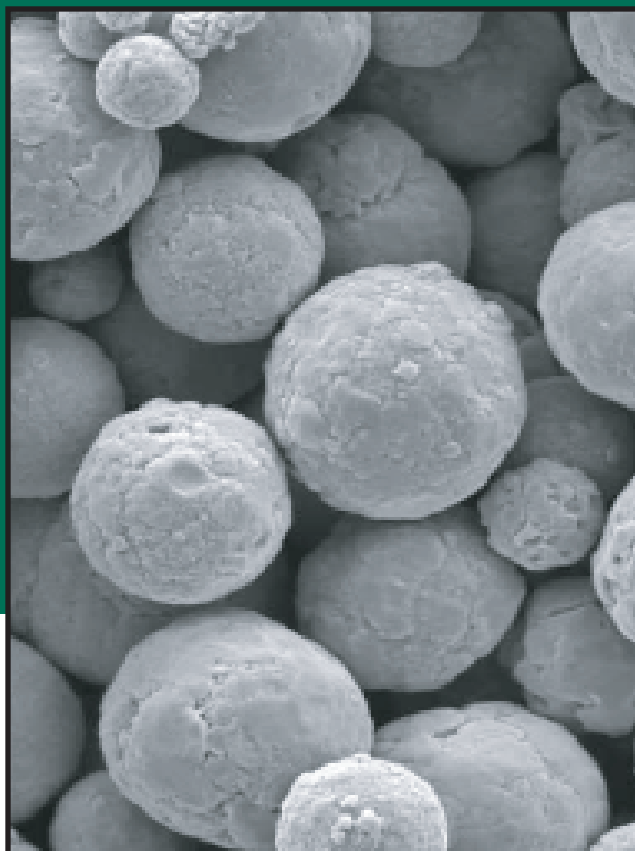


NOVAMET

Developing Unique Customer Solutions Since 1976

Conductive Nickel Spheres (CNS)



Conductive Nickel Spheres

Conductive Nickel Spheres (CNS) is a high purity, smooth, spherical nickel powder produced by a tightly controlled process and advanced air classification technology.

Applications

The narrow particle size distribution makes CNS an excellent filler in conductive adhesives and inks where high packing density and conductive properties are critical. Up to 30% of CNS can be blended with pure silver particles without a significant loss of conductivity. CNS can be plated with silver to enhance conductivity.

Advantages of Conductive Nickel Spheres

- CNS is magnetic. Particles can be aligned magnetically to form circuit paths.
- CNS has a low surface area and is agglomerate-free for maximum packing density.
- Nickel is oxidation resistant.

Typical Properties of CNS Nickel Powder

Chemical Properties

Nickel	Oxygen	Carbon	Iron	Sulfur
99.6%	3000 ppm	30 ppm	800 ppm	30 ppm

Size Distribution (Microtrac) microns

Type	d10	d50	d90
CNS-10	4	6	10

Packaging

Size	Weight
1 gal/4 liter can	11 lb/5 kg
5 gal/20 liter pail	55 lb/25 kg

Note: All containers lined with a polyurethane bag.

NOVAMET

Developing Unique Customer Solutions Since 1976

Novamet Specialty Products Corporation
1420 Toshiba Drive, Suite E, Lebanon, TN 37087
Phone: (201) 891-7976 Fax: (201) 891-9467
www.novametcorp.com

NOVAMET Specialty Metal Flakes, Powders, Pigments, Oxides and Coated Products